



# SEWER EQUIPMENT COMPANY OF AMERICA

[\[Home\]](#)
[\[Search\]](#)
[\[?\]](#)
[About Us](#) | [Equipment & Sales](#) | [Parts & Accessories](#) | [Job Openings](#) | [Contact Us](#)

## Equipment & Sales

- [Trailer Jets](#)
- [Truck Jets](#)
- [800-HPRTV](#)
- [800-HPR](#)
- [800-H](#)
- [800-HF](#)
- [747-TK](#)
- [800](#)
- [Jet-Away](#)
- [Rodding Machines](#)
- [Mechanical Catch Basin Cleaners](#)
- [Bucket Machines](#)
- [Cable Machines](#)
- [RamVac Catch Basin Cleaners](#)
- [RamVac Combo Sewer Cleaners](#)
- [RamVac Vacuum Excavators](#)

## Model 800-H Truck Jet



Model 800-H Truck Jet  
Truck Mounted High Velocity Sewer Cleaning Machine With  
- Hydrostatic Drive -

- Provides heavy duty cleaning and maintenance of sanitary and storm sewers
- Specially designed hydraulic pump is direct coupled to truck chassis engine and powers water pump. Hydrostatic drive eliminates the need for auxiliary engines and belts/pulleys
- Engine noise is limited to truck engine and dramatically decreased at operators station
- Standard water recirculation system eliminates problems at pump, hose or tank freezing, even while truck is in motion

## Features

### Hydrostatic Drive:

Eliminates the additional maintenance work needed for auxiliary engine and belt/pully drive systems. A unique hydraulic pump, direct coupled to the truck's drive shaft or World Transmission, powers a rear mounted hydraulic motor which drives the jetter's water pump. Overall maintenance is minimized while allowing for full-time water circulation during cold weather, even when the truck is traveling at highway speeds.

### Water Pumps:

The ability to remove sewer debris such as sand, sludge, silt, hardened grease, stone, and pesky roots is supplied by our high pressure water pumps with capabilities of producing from 18-100 gallons per minute (GPM) while maintaining up to 4000PSI.

### Water Tanks:

Proven construction techniques and the latest technological advances are utilized in the construction of the Model 800-H water tanks. The most popular version is the Duraprolene Water Tank with 1/2" thick walls, full "top to bottom" baffle, and U.V. stabilization.

#### **Hose Reel:**

Heavy duty hose reels are available with capacities of 600'-1200' and are designed to withstand maximum PSI working pressure without distortion.

#### **Rear Pump Compartment:**

The Model 800-H operating components located in the rear are protected by a 14 gauge, heavy duty, bolted body which eliminates both exposure to the elements as well as vandalism damage. Vertically hinged access doors allow superb maintenance accessibility. Lockable steel or aluminum boxes are available. An optional rear canopy door insures security of the control panel components as well as protecting operator from exposure to weather. The "bolted" rear compartment panels can be easily removed for improved access to major components.

#### **Standard Accessories:**

In addition to the major components, every Model 800-H is supplied with a complete set of standard accessories including, but not limited to: hardened steel nozzles, nozzle extension, protective hose guide, fill system, fill hose, tank ladder, compartment ladder, recirculation system, control panel, sight gauge, low water warning light, ICC lights, hose level wind, and wash down gun with 25' extension hose.

#### **Distributor Support:**

Sewer Equipment Company Of America equipment is serviced and supported by America's most knowledgeable team of technicians and mechanics. Please call our toll-free number to contact your local distributor.

### Options

#### **Roll-Up Doors**

Deluxe roll-up doors, eliminating the dangers inherent with pullout or fold-out doors which extend into traffic. Standard installation is a header/counterbalance design which enables the door to "coil up" into a header. There are no rollers or cable to maintain. This door is virtually maintenance free.



#### **Roll-Out Root Cutter Maintenance Box**

This sealed, epoxy coated oil reservoir is equipped with a hand pump which forces hydraulic oil into the root cutter which is stored inside. This system keeps Root Cutters lubricated and minimizes the mess by sealing the Root Cutter and oil in the storage box.



#### **Hydraulic Root Cutters:**

The overall productivity of the 800-H can be enhanced with the use of a hydraulic root cutter. Various models are available from the heavy duty WJ-49R "Ring Style" Root Cutter", the [Patriot Root Cutter](#), or the more sleek and aerodynamic "Mini-Root Cutter". Blockage busting, grease cutting, and root cutting jobs are simplified and completed faster with the ring



style or mini-root cutter. Blade sizes ranging from 3" to 24" as well as skids are available.



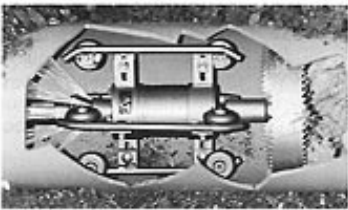
### Specialty Nozzles:

The Model 800-H can be equipped with any of the Sewer Equipment Company Of America specialty nozzles such as the "[Little Thunder Nozzle](#)". This highly specialized, weighted nozzle is designed for larger diameter lines with excessive deposits of sand, silt, and heavy debris.

[>Back To Top](#)

## Check Out These "Must Have" Accessories For Your Jetting Equipment

**Patriot Root Cutter**



**Diamond Tap Cutter**



**Hose**



**Pumps**



**Best Products. Best Local Support.**

Toll Free : 1-800-323-1604 E-Mail : [sales@sewerequipment.com](mailto:sales@sewerequipment.com)

2111 CHESTNUT AVE. # 270 • GLENVIEW, ILLINOIS 60025 • U.S.A.: 1-847-729-3316 FAX: 1-847-729-3547

HOME | ABOUT US | EQUIPMENT & SALES | PARTS & ACCESSORIES | JOB OPENINGS  
CONTACT US | SITE MAP | SEARCH | F.A.Q. | SAFETY ZONE

© 2010 Sewer Equipment Company Of America ®, All Rights Reserved.

All specifications subject to change without written notice. See your local dealer for details.