

[About Us](#) | [Equipment & Sales](#) | [Parts & Accessories](#) | [Job Openings](#) | [Contact Us](#)

#### Equipment & Sales

- [Trailer Jets](#)
- [Truck Jets](#)
- [800-HPRTV](#)
- [800-HPR](#)
- [800-H](#)
- [800-HF](#)
- [747-TK](#)
- [800](#)
- [Jet-Away](#)
- [Rodding Machines](#)
- [Mechanical Catch Basin Cleaners](#)
- [Bucket Machines](#)
- [Cable Machines](#)
- [RamVac Catch Basin Cleaners](#)
- [RamVac Combo Sewer Cleaners](#)
- [RamVac Vacuum Excavators](#)

### Model 800-HPR Series 3 Truck Jet



#### NEW Series 3 Features:

**Environmental Friendly Hydraulic Fluid** - This hydraulic fluid is non-toxic and inherently biodegradable and therefore non threatening to the ecosystem in the event of a fluid leak.

**33% Reduction in Engine Operating Speed** – This means lower fuel costs and a safer & quieter environment for operators and neighborhood residents while cleaning sewers.

**¾" Thick Duraprolene Water Tank Walls** – Creates a more durable and robust water tank which will last the lifetime of the jetter.

**New Improved Roll Up Doors** – Sturdier door design with ergonomically improved grab handles for opening and closing.

**Improved Water Tank Baffling System** – New Interlocking & bolt together system has tested stronger than previously used welded system.

**New Water Pump Layout** – Easy access to pump head to perform scheduled maintenance. No need to climb inside truck jetter.

**Lower Operator Control Station** – Now more ergonomically friendly to those vertically challenged operators.

**Consolidated Digital Display Monitor** – Monitors and consolidates multiple engine parameters (RPMs, Oil Press., Temp., System Voltage) on one gauge for simultaneous viewing.

**Workstation PTO Activation** – Activate the PTO right from the operator control station when you are ready; saving fuel and operating more safely in the process.

**New Improved Water Pump Shut Off** – No longer uses 3 Way Ball Valve to shut off water; instead shuts off the hydraulics to the Water Pump. No more Ball Valves to wear out.

#### Plus These Same Great Features:

- Specially designed for use in cold weather climates
- The safest and most "user friendly" truck jet available
- High pressure jet system supplies power to clean sewers of sand, silt, grease, roots, and other accumulations

- Hose reel is housed in the enclosed and heated rear compartment when not in use
- When in operation, the hose reel telescopes out of the rear compartment and is now able to rotate/pivot 190 degrees for maximum access to the difficult to reach manholes
- Optional Automatic Level Wind System which eliminates operator contact with sewer hose when in operation
- The main components including the water pump, power system, hose reel, sewer hose, and associated plumbing are kept heated to eliminate the dangers of freezing. Freezing any part of the system can put operators in danger
- The rotating/pivoting hose reel helps operator to reach difficult to access manholes and also allows operator to remain "away" from dangerous traffic situations when in the jetting mode

Hose Reel Enclosed In  
Heated Rear Compartment

BEFORE

Hose Reel Extended



AFTER

#### Patented Telescoping/Rotating/Pivoting Hose Reel:

This unique design allows for storage of the hose reel in the heated rear compartment when not in use. When in operation, the rear roll-up door opens and the hose reel ["Telescopes"](#) out of the heated rear compartment and is now able to "Rotate/Pivot" a total of 190 degrees. This allows maximum access to remote manholes, reducing operator fatigue, as well as minimizing operator exposure to "high traffic zones".

#### Automatic Hose Reel Level Wind:

This unique device allows the operator to watch as the high pressure sewer hose travels up and cleans the pipe. The "Automatic Level Wind" will automatically wind the sewer hose without the operator contacting the sewer hose or any other dangerous substances which may cling to the sewer hose or level wind. [>Diagram](#)



#### Heated Rear Compartment:

An 80,000 B.T.U. rear mounted heater keeps the sewer hose, hose reel, water pump, and any associated plumbing from exposure to freezing temperatures. This means operator will not be exposed to injuries which could occur from a hose burst or from freezing of any jet system components.

#### Hydrostatic Drive System:

The hydrostatic drive system can be front mounted or powered by a World Transmission mounted PTO to supply power to both the high pressure water pump system and the hydraulic system. The Hydrostatic system keeps noise at a minimum. The Model 800-HPR Series 3 is also available with a diesel or gasoline auxiliary engine or PTO drive.

#### High Pressure Water Pumps:

Powerful water pumps mean superb cleaning of sewer line grease, sand, silt, and other

accumulations. Pumps have pressure ratings up to 4,000 PSI and water volume ratings 18 to 100 GPM. Specific PSI and GPM water pumps are utilized based on your specific sewer jetting need. Sewer hose sizes are 1/2", 5/8", 3/4" 1", and 1-1/4".

**Roll-Up Doors:**

The Model 800-HPR has a rear Roll-Up Door with side Roll-Up doors also available. These deluxe doors eliminate the dangers inherent with pull-out or fold-out doors which protrude into traffic creating the possibility of an accident.



**Tool Boxes/Skirting:**

Both aluminum and steel tool boxes are available. Boxes are sealed, lockable and keyed alike.

**Roll-Out Root Cutter Maintenance Box:**

This sealed, epoxy coated oil reservoir is equipped with a hand pump which forces hydraulic oil into the root cutter which is stored inside. This system keeps Root Cutters lubricated and minimizes the mess by sealing the Root Cutter and oil in the storage box.



**Root & Grease Cutter Tools:**

The Model 800-HPR Series 3 Truck Jet is not complete without one of the many root and grease cutting tools available including the Patriot Root Cutter, the Mini Root/Grease Cutter and the Buzz-Bomb Grease Cutting Nozzle.



**Specialty Nozzles:**

Different conditions will demand different nozzles. From the lightweight, aluminum Combination Nozzle to the extra heavy weight Thunder Nozzles, the Model 800-HPR Series 3 can be armed to clean and service small service lines and extra large storm lines-you pick the nozzle per the job requirement.

**Distributor Service Support:**

Sewer Equipment Company Of America equipment is serviced and supported by America's most knowledgeable team of technicians and mechanics.

**Manhole Access:**

Oftentimes, manholes are difficult to access with a "Fixed Hose Reel" Truck Jet. The Model 800-HPR Series 3 with its "Telescoping / Rotating / Pivoting Hose Reel" makes easy work of any "Hard to Reach Manholes".



**Download the full brochure. Here's how:**

Click on the file name listed below.

 [Model 800-HPR](#)

Need help with Adobe PDF files? Click the icon to get your free copy.



Equip the Model 800-HPR Series 3 Truck Jet with the most innovative sewer tools on the market to maximize cleaning effort. From Universal Cleaning Nozzles to Root & Grease Cutting Tools to Chisel Point Nozzles, we have everything you need to get the job done quickly and safely.



Universal Cleaning Nozzle



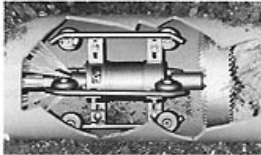
Patriot Root Cutter



Chisel Point Nozzle

Check Out These "Must Have" Accessories For Your Jetting Equipment

**Patriot Root Cutter**



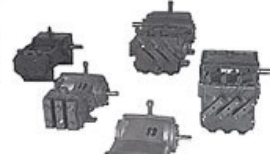
**Diamond Tap Cutter**



**Hose**



**Pumps**



2111 CHESTNUT AVE. # 270 • GLENVIEW, ILLINOIS 60025 • U.S.A.: 1-847-729-3316 FAX: 1-847-729-3547  
HOME | ABOUT US | EQUIPMENT & SALES | PARTS & ACCESSORIES | JOB OPENINGS CONTACT US | SITE MAP | SEARCH | F.A.Q. | SAFETY ZONE  
©2010 Sewer Equipment Company of America