



SEWER EQUIPMENT COMPANY OF AMERICA®

[\[Home\]](#)
[\[Search\]](#)
[\[?\]](#)
[About Us](#) | [Equipment & Sales](#) | [Parts & Accessories](#) | [Job Openings](#) | [Contact Us](#)

Equipment & Sales

- [Trailer Jets](#)
- [Truck Jets](#)
- [800-HPRTV](#)
- [800-HPR](#)
- [800-H](#)
- [800-HF](#)
- [747-TK](#)
- [800](#)
- [Jet-Away](#)
- [Rodding Machines](#)
- [Mechanical Catch Basin Cleaners](#)
- [Bucket Machines](#)
- [Cable Machines](#)
- [RamVac Catch Basin Cleaners](#)
- [RamVac Combo Sewer Cleaners](#)
- [RamVac Vacuum Excavators](#)

Model 800-HPRTV Truck Jet

The "Machine For All Seasons" can now...

JET and TV



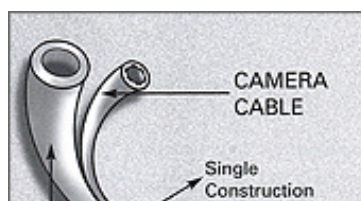
Model 800-HPRTV Truck Jet* One Unit For Sewer Jet Cleaning **AND** Color Television Inspection Of Pipe

The Model 800-HPRTV Truck Unit combines the power of high pressure sewer cleaning, with the technology of color television inspection. These two abilities allow any city, contractor or agency to clean and televise pipe with one unit instead of two. The 800-HPRTV is equipped with the innovative and unique "Umbilical Cord"* - this single construction cord houses both high pressure sewer hose *and* a video communications cable. This allows the jet camera to propel itself through the pipe using high pressure water and "color televise" as it travels. At street level, the operator views the sewer pipe on a TV monitor as the jet camera travels from manhole to manhole. The guess work is done.

Water Jet Propelled 360 Degree View TV Camera

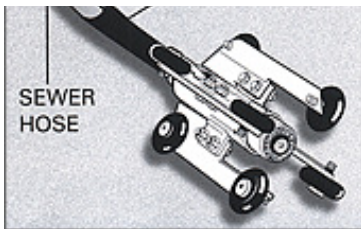
The Model 800-HPRTV Truck Jet unit is equipped with a high resolution color camera with inter-changeable skids.

Click image for details>



UMBILICAL CORD*

One of the most innovative products to enter the sewer and pipe cleaning industry in recent history has been the Sewer Equipment Company of

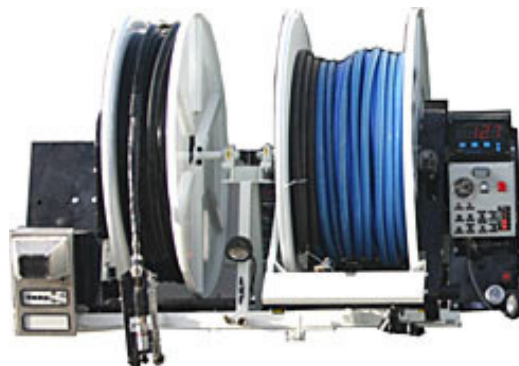


America Umbilical Cord*. The repairable Umbilical Cord* is comprised of a single construction cord which houses both a sewer hose and a television cable.

<Click image for more details

DUAL HOSE REELS

The Model 800-HPRTV Truck Jet has two Hose Reels: One hose reel is equipped with the Umbilical Cord*, a single construction cord that houses Sewer Hose and Television Cable. Attached at the end of the Umbilical Cord* is a color TV camera and a jet thruster nozzle. The nozzle powers the TV camera through the sewer pipe. The second reel is equipped with either 1", 3/4", 5/8" or 1/2" sewer hose which is devoted entirely to heavy duty sewer cleaning.



Hose Reel Enclosed In Heated Rear Compartment



BEFORE

Hose Reel Extended (Patented)



AFTER

Features / Options

Dual Patented Telescoping/Rotating/Pivoting Hose Reels::

The dual hose reels on the Model 800-HPRTV are stored in the heated rear compartment when not in use. When in operation, the rear roll-up door opens and the hose reels "TELESCOPE" out of the heated rear compartment-and are now able to "Rotate/Pivot" a total of 190 degrees. This allows maximum access to remote manholes reducing operator fatigue as well as minimizing operator exposure to "high traffic zones".



Dual Hose Reels

High Pressure Water Pumps:

Powerful water pumps mean superb cleaning of sewer line grease, sand, silt and other accumulations. Pumps have pressure ratings up to 4,000 PSI and water volume ratings 18 to 100 GPM. Specific PSI and GPM water pumps are utilized based on your specific sewer jetting needs.

Heated Rear Compartment:

An 80,000 B.T.U. rear mounted heater protects the sewer hose, hose reels, water pump and any associated plumbing from exposure to freezing temperatures. This means operators will not be exposed to injuries which could occur from a hose burst or from the freezing of components.

Hydrostatic Drive System:

The hydrostatic drive system can be front mounted or powered by a World Transmission mounted PTO to supply power to both the high pressure water pump system and the hydraulic system. The Hydrostatic system minimizes noise. PTO and auxiliary engine drive also available.

Roll-Up Doors:

The Model 800-HPRTV has a rear roll-up door with side roll-up doors also available. These deluxe doors eliminate the dangers inherent with pull-out or fold-out doors which protrude into traffic.

Duraprolene™ Water Tank:

The strongest and safest water tank on the market is the "Duraprolene Water Tank" with its 1/2" thick walls and its network of "top to bottom" baffles. This tank is U.V. stabilized and repairable. The flexible "Duraprolene Water Tank" is resistant to rust and any corrosion.

Tool Boxes/Skirting:

Both aluminum and steel tool boxes are available. Unit also equipped with long handled tool storage.

Roll-Out Root Cutter Maintenance Box:

This system keeps root cutters lubricated and minimizes the mess by sealing the root cutter and oil in the storage box.

Root & Grease Cutting Tools and Specialty Nozzles:

The Model 800-HPRTV Truck Jet is not complete without one of the many root and grease cutting tools available such as the Patriot Root Cutter. Various nozzles such as the Mini-Missile Nozzle or the heavyweight Thunder Nozzle are also available.

Distributor Service Support:

Sewer Equipment Company Of America equipment is serviced and supported by America's most knowledgeable team of technicians and mechanics.



Roll-Up Doors



Duraprolene™
Water Tank
(Click For Details)



Root Cutter
Maintenance Box



Model WJ-49P Patriot
Root and Grease Cutter

Download the full brochure. Here's how:

Click on the file name listed below.

 [Model 800-HPRTV](#)

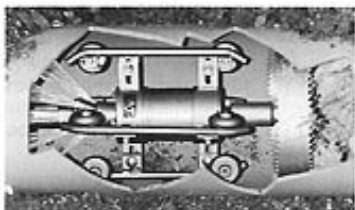
Need help with Adobe PDF files? Click the icon to get your free copy.



[>Back To Top](#)

Check Out These "Must Have" Accessories For Your Jetting Equipment

Patriot Root Cutter



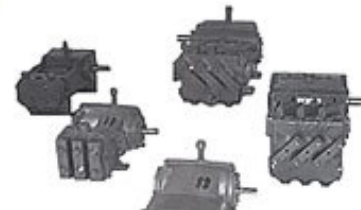
Diamond Tap Cutter



Hose



Pumps



Best Products. Best Local Support.

Toll Free : 1-800-323-1604 E-Mail : sales@sewerequisite.com

2111 CHESTNUT AVE. # 270 • GLENVIEW, ILLINOIS 60025 • U.S.A.: 1-847-729-3316 FAX: 1-847-729-3547

HOME | ABOUT US | EQUIPMENT & SALES | PARTS & ACCESSORIES | JOB OPENINGS
CONTACT US | SITE MAP | SEARCH | F.A.Q. | SAFETY ZONE

© 2010 Sewer Equipment Company Of America ®, All Rights Reserved.
All specifications subject to change without written notice. See your local dealer for details.