

[Aries Industries](#)

Call Toll-Free:

(800) 234-7205

<input type="text" value="Search here..."/>	<input type="button" value="Go!"/>
---	------------------------------------

- [Home](#)
- |
- [About Us](#)
- |
- [News](#)
- |
- [Locations](#)
- |
- [Contact Us](#)
- |
- [Customer Service](#)
- |
- [Careers](#)

The Trusted Industry Leader in Pipeline Inspection & Rehabilitation Equipment



[Distributor Locator](#)

[Sewer](#)

[Gas](#)

[Water](#)

[Electric](#)

[Geophysical](#)

- [Products](#)
 - [Pipeline & Sewer Cameras](#)
 - [Transporters](#)
 - [Track Transporters](#)
 - [Wheeled Transporters](#)
 - [Pathfinder & Pathfinder XL](#)
 - [Large Transporters](#)
 - [Lateral Reinstatement Cutters](#)
 - [Sealing / Grout Systems](#)

- [Profiling Measurement Systems](#)
- [Pipeline Data Collection Management](#)
- [Deep Well & Bore Hole Cameras](#)
- [Custom Products & Systems](#)

- [Systems](#)
- [Industries Served](#)
- [Contact Us](#)
- [Request a Quote](#)

Select Language

Powered by [Google™ Translate](#)

[2010 Governors Export Award Press Release](#)

Latest Update
May 13th, 2010

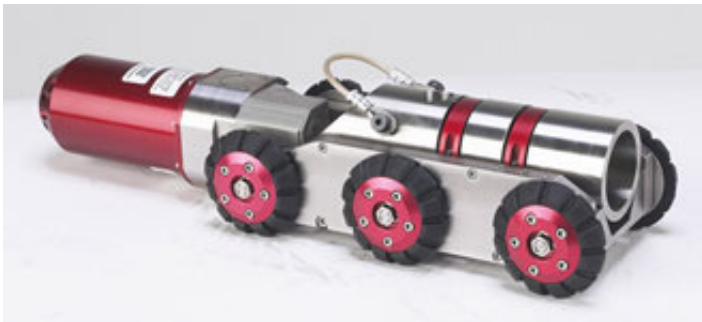
[Aries Awarded 2010 Wisconsin Governor's Export Award](#)

[Read More](#) >

[View All News](#) >

[Home](#) » [Products](#) » [Transporters](#) » Wheeled Transporters

Wheeled Transporters



More Photos (*Click to View*)



Have a Question?

Name:

E-mail:

Questions:

Systems

[Inspection Systems](#)

[Rehabilitation Systems](#)

Industries

[Sewer](#)

[Water](#)

[→ Request a Quote](#)

Mini-Badger Wheeled Transporter

ARIES' Mini Badger Six Wheel Drive Multi or Single Conductor Camera Transporter is an economical wheeled transporter to inspect 6" and larger diameter lines. The Mini Badger successfully navigates 6" diameter lines, and is only 18" long. Various lines sizes are available along with a large line kit with 8" and/or 10" pneumatic wheels for pipe sizes up to 48".

Badger Wheeled Transporter

The Badger six-wheeled transporter brings you another tool to enhance your sewer inspection options. This transporter features rugged stainless steel construction with a powerful proven transmission and DC continuous duty rated motor system. The transmission ARIES designed for the tractor is extremely heavy duty, with significantly larger gears to take ongoing operation in adverse conditions and provides forward, neutral and reverse gearing. The robust power package can drive the transporter through the pipe at speeds over 75 feet per minute.

The six-wheel drive design enables it to negotiate obstacles in 8" and larger diameter pipes. Various tire shapes and sizes are available to ensure adequate ground clearance in any pipe condition. The rugged, stainless steel construction is a compact 21" design, for those tough to get into inverts. The Badger operates with multi and single conductor systems.

Steerable Badger Wheeled Transporter

The Steerable Badger is an efficient camera transporter for the inspection of 6" pipes and larger. Its powerful dual motor drive system enables productive pipeline inspections over long distances. The optional electrically adjustable camera lift positions the camera optimally in the center of the pipe. After inspection, the neutral transmission makes it possible to finish the work and retrieve the transporter for optimal productivity. All components and sub-assemblies are manufactured for maximum performance and reliability. The unit is pressure tested up to 50 psi.

550 Elizabeth Street | Waukesha, Wisconsin | 53186 | Phone: 262-896-7205

© 2009 Aries Industries. All rights reserved. [Industrial Marketing by Top Floor Technologies](#)

[Site Map](#)